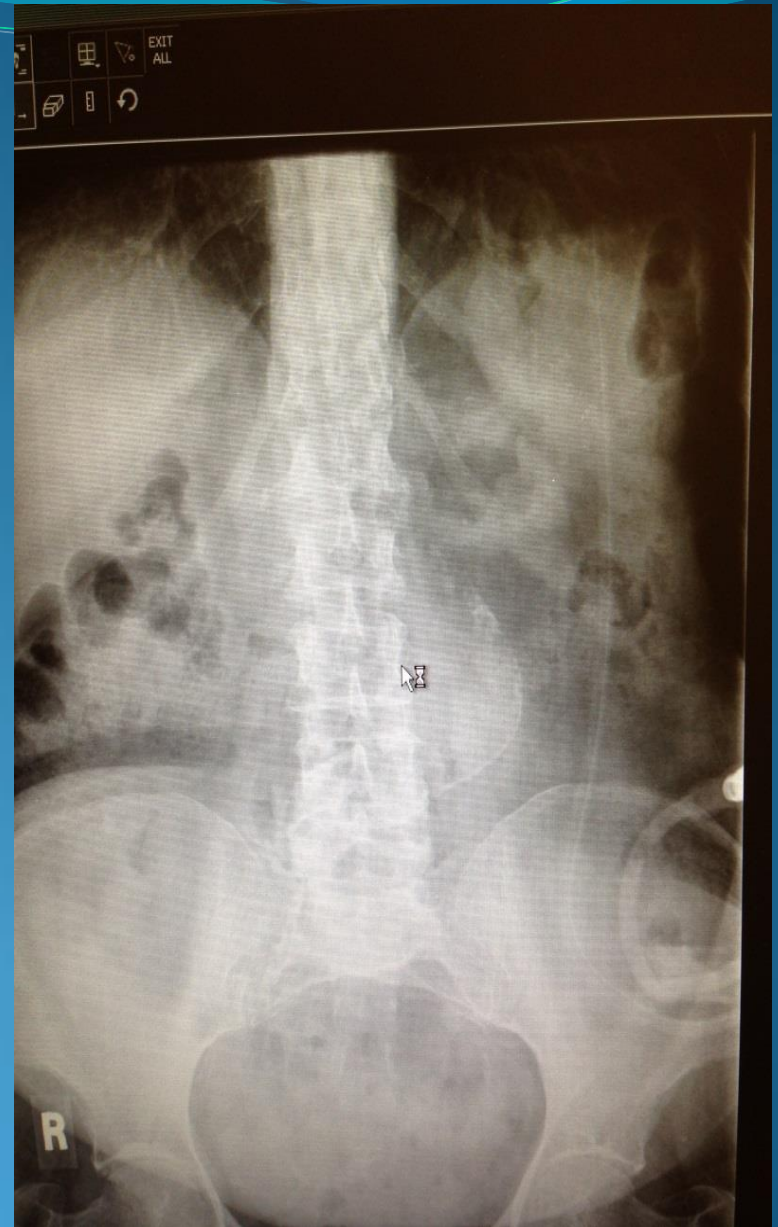


Laparoscopic PD Catheter Insertion

M. Tabari MD, FRCSC

Oct, 19, 2013



Reasons Cited by Patients for Choosing Peritoneal Dialysis

- Greater autonomy and flexibility in lifestyle with the ability to work and travel
- Ability to perform the therapy at home
- Eliminate burden on family members to provide transportation to in-center dialysis
- Fewer dietary and fluid restrictions
- Avoidance of painful needle sticks



Peritoneal Dialysis for ESRD

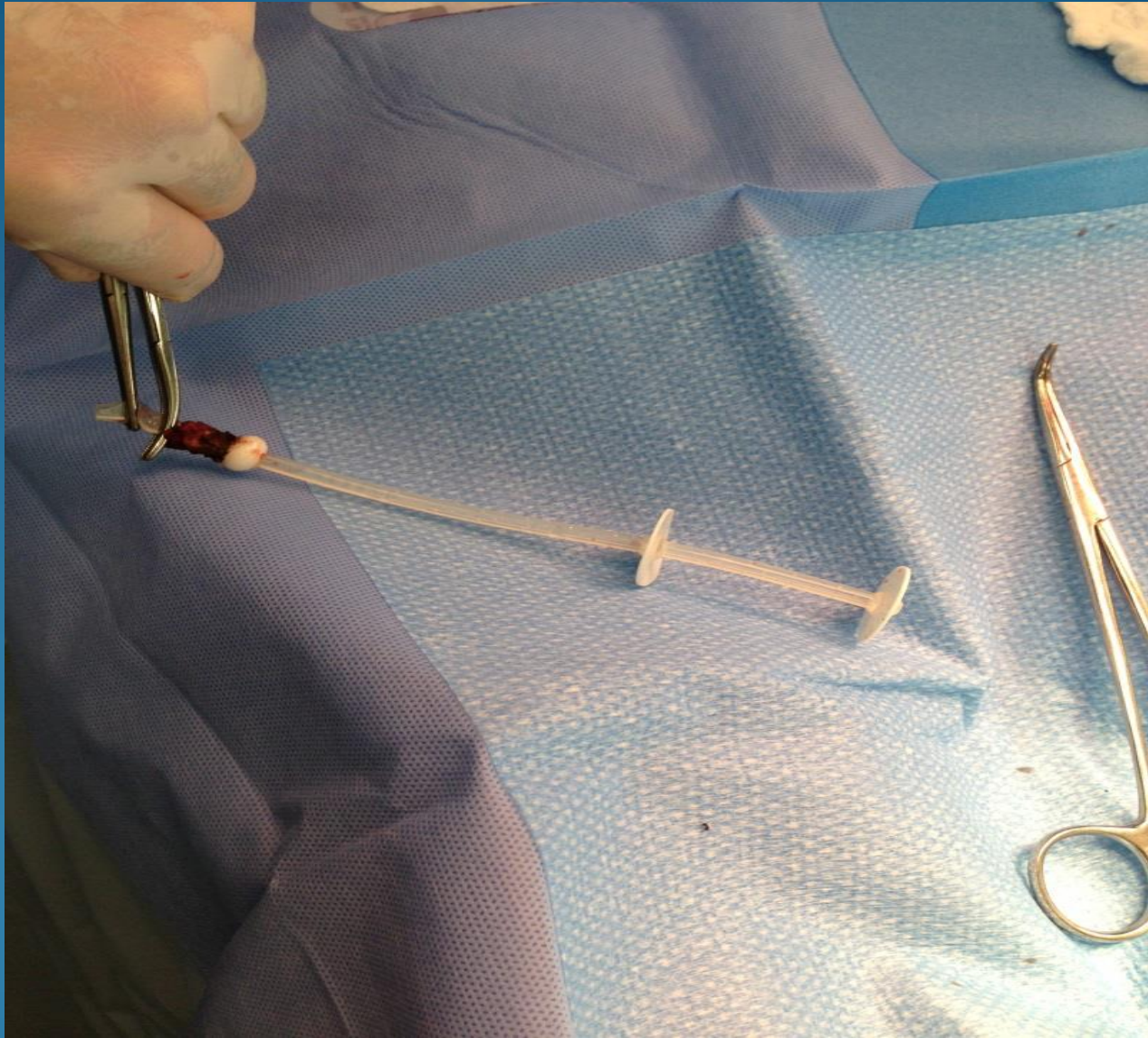
- Improved survival in first 2-3 years
- Preservation of residual renal function
- Lower prevalence of hep C
- Lower cost
- Improved renal transplant results
- Better volume and blood pressure result
- Greater patient autonomy and quality of life

Peritoneal Dialysis for ESRD

- Not competitive with HD
- Both methods are complimentary
- Peritoneal dialysis first
- Timely conversion to hemodialysis

Most PD catheter problems causing transfer to HD occur during the first year (60%)

- Catheter problems are a leading cause of transfer from PD to HD during the first year
- Most catheter complications can be prevented by appropriate preoperative planning, use of proactive catheter implantation technique, or remedied by catheter rescue procedures
- A focus on catheter procedures is especially critical for PD technique survival during the first year



Catheter Types

- Concerns about catheter tip migration, tissue entrapment, and cuff extrusion are more reliably addressed by proper implantation technique than by complicated designs
- Catheter designs can not compensate for a poorly performed implantation procedure

Peritoneal Dialysis for ESRD

- Catheter function is directly related to skill of catheter placement team
- Proper catheter placement and care of healing exit-site are key to success
- Catheter-related complications are major reasons for discontinuing peritoneal dialysis
- Technique success in initial 6 months sets stage for optimizing long-term participation

Commonest Reasons for failure

- Omental Wrap
- Fibrin plug
- Poor angulation of Catheter
- Tip migration

Laparoscopic Advantages

- Can visualize and correct potential problems from :

Catheter tip migration

Omental entrapment

Peritoneal adhesions